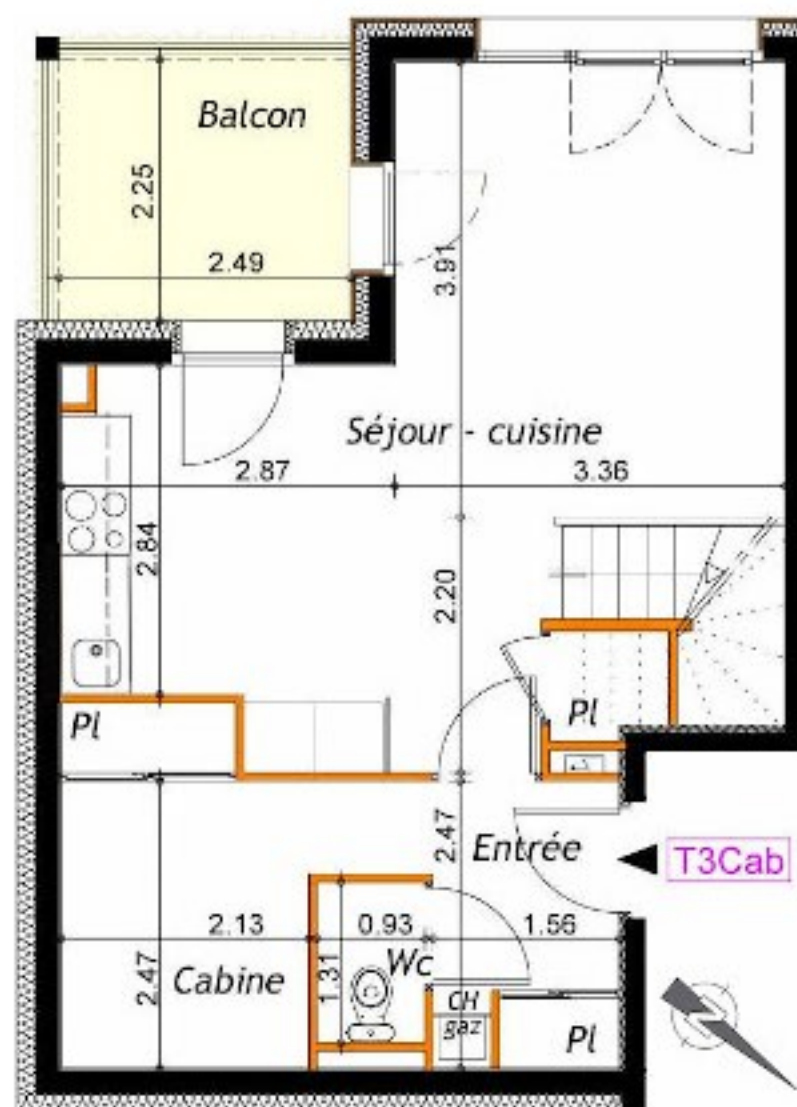


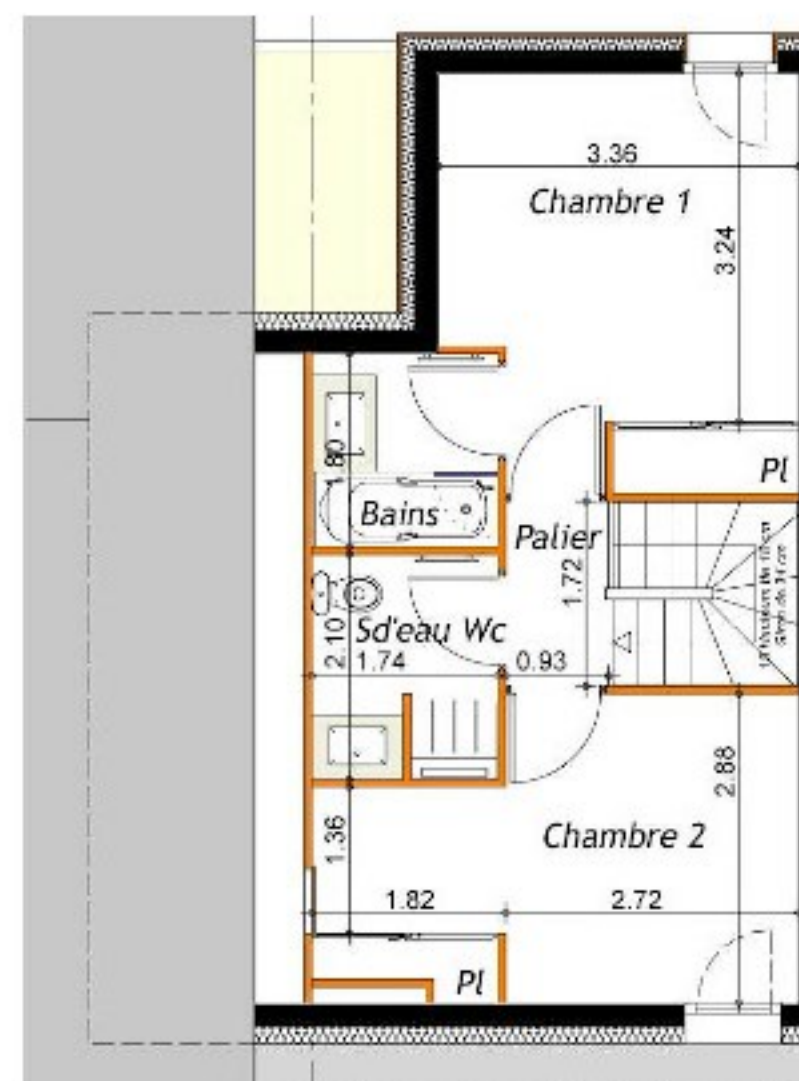
Duplex 3 Rooms Cabin - Chalets 4 & 5

Duplex 3 Rooms Cabin n°4.11

Surfaces : living 48,78 m²
terrace 8,16 m²



R+1



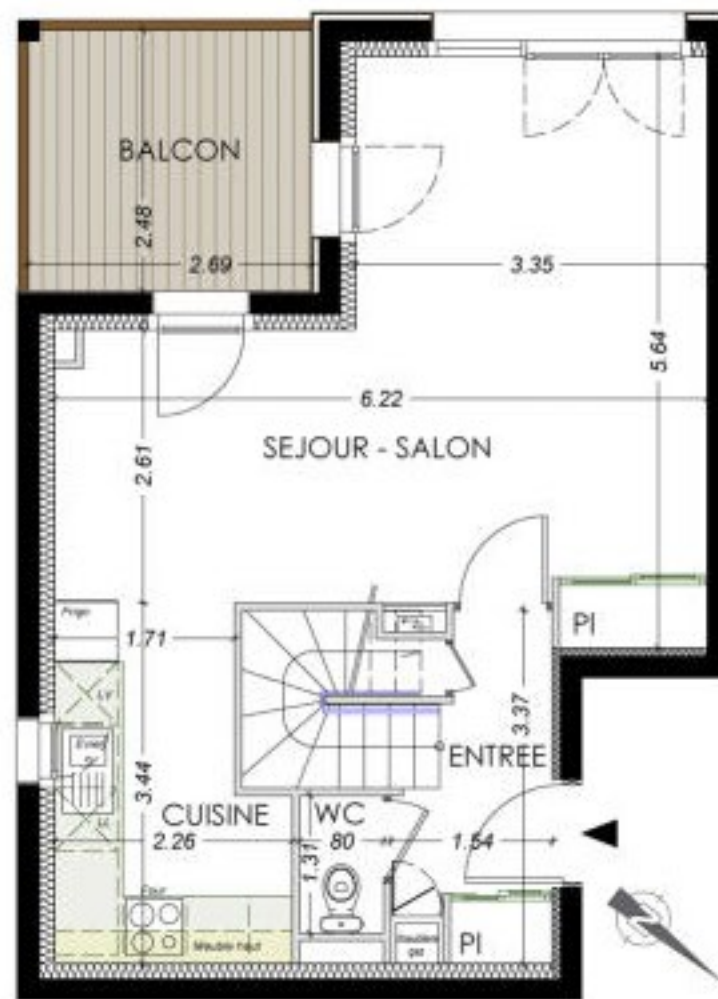
Attic

Duplex 3 Rooms Cabin - Chalets 4 & 5

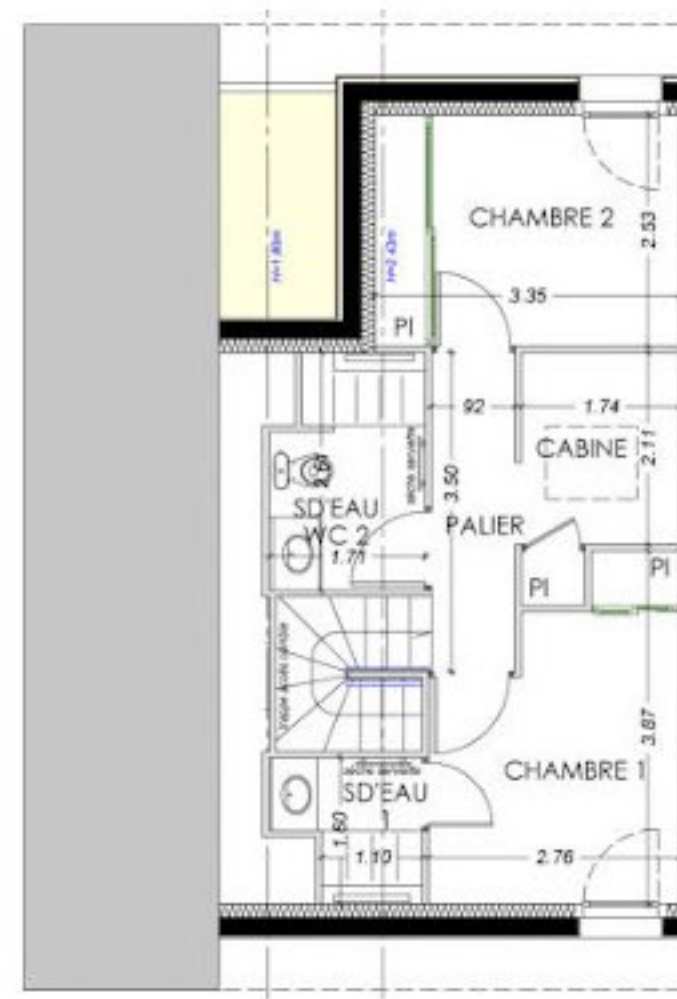
Duplex 3 Rooms Cabin n°5.13

N°	Surfaces	
	living	terrace
5.11	68,46 m ²	7,44 m ²
5.12	68,51 m ²	7,44 m ²
5.13	68,55 m ²	7,44 m ²
5.14	68,42 m ²	7,44 m ²

2 shower rooms



R+1



Attic

Duplex 3 Rooms Cabin - Chalets 4 & 5

Energy saving

- Very high energy performance (THPE): energy consumption 20% lower than the RT2005 reference.
- Programmable regulation for apartment heating and lighting of common areas

Comfort & Pleasure

- Generous and functional surface.
- Reinforced thermal and acoustic insulation.
- Heating and production of domestic hot water provided by individual propane gas boiler. Heating provided by a low temperature heating floor with automatic regulation.
- Bathrooms equipped with bathtub and / or walk-in shower. Electric towel radiator in bathrooms.
- Air renewal by controlled mechanical ventilation (VMC) individual single humidity sensitive flow.
- Very complete household appliances (induction hob, extractor, oven, fridge / freezer, microwave, dishwasher, washing machine).
- Numerous wall cupboards various height with sliding doors, separated with a wardrobe side and a shelves side (x4), with luggage rack.
- Blackout of window doors by roller shutters with electrical operation.
- TV socket with TV / FM and SAT splitter – RJ45 socket (telephone) in living room and master bedroom.
- Porcelain stoneware tiles and laminate flooring in the bedrooms.

Security

- Reinforced security landing door
- Videophone for opening the front door of the building
- Protective grids for accessible bathroom racks.